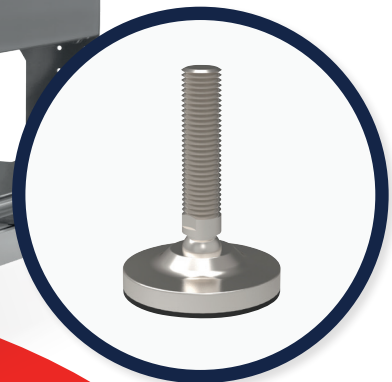




**Wixroyd**<sup>®</sup>  
**GROUP**  
AN ESSENTRA COMPANY

# INDUSTRIAL APPLICATIONS

WIXROYD | AUTOMOTION



wixroyd.group | 0333 207 4497

IA 06/24

# IN THIS CATALOGUE

## MACHINING CENTRE

INJECTION MOULDING ..... 3  
FOOD PACKAGING MACHINE ..... 4  
LABEL MACHINE ..... 5  
MACHINING CENTRE ..... 6

## MEDICAL & SCIENTIFIC

MRI SCANNER ..... 7  
MEDICAL LABORATORY ..... 8  
DENTAL LABORATORY PRESS ..... 9  
3D PRINTER ..... 10

## TRANSPORT & AUTOMOTION

LORRIES & CAMPERVANS ..... 11  
PRIVACY SCREENS & DOORS ..... 12  
TRAINS ..... 13  
EV CARS ..... 14  
LINKAGES ..... 15

## CONSTRUCTION

FAÇADES ..... 16  
SOLAR PANEL TRACKERS ..... 17  
LIFTING EQUIPMENT ..... 18

## SPORT & LEISURE

GYM EQUIPMENT ..... 19  
SOUND & LIGHT RIGGING EQUIPMENT ..... 20

## MARINE, OIL & GAS

YACHTS ..... 21  
OIL & GAS EXPLORATION SUBSEA ..... 22

## INJECTION MOULDING

**Automation hardened steel linear rails** are regularly used in injection machine moulding machines due to their durable nature that improves longevity and repeatability. Also our **high-precision bearings** are ideal for maintaining consistent, accurate movements, ensuring tight tolerances for quality moulding.

Due to excellent thermal stability which prevents deformations under high temperatures, our **stainless steel shafts** are a popular choice. **Wixroyd ergonomic handles** are commonly used for ease of maintenance and frequent use.

### L1016 & L1016.U

LINEAR GUIDE RAIL & CARRIAGE  
Hardened & ground steel.



### P0150

CAPTIVE SCREW PAN HEAD  
Stainless steel (AISI 304).



### L1772

HARDENED STAINLESS SHAFTS  
Corrosion resistant.



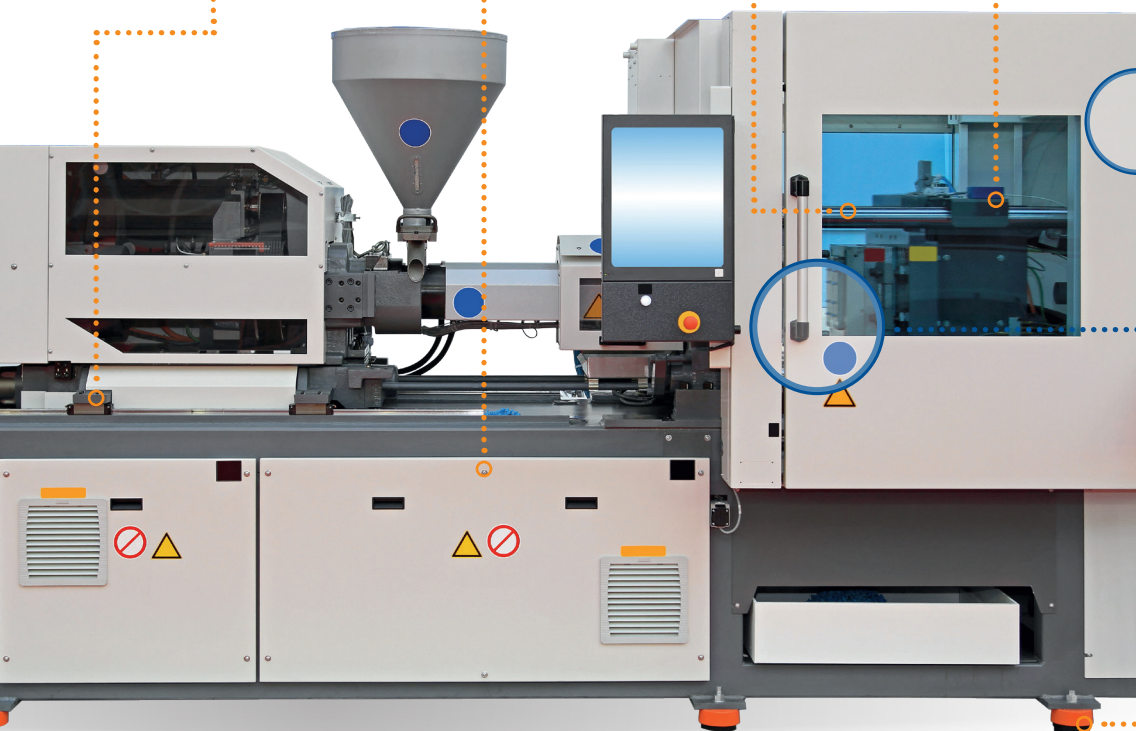
### L1751

STAINLESS LINEAR CARRIAGES  
Aluminium housing.



### S0523

SURFACE MOUNT LEAF HINGES  
Stainless steel (AISI 304).



### 79250

PULL HANDLES  
Polyamide.



### P2161

STAINLESS MACHINE MOUNTS  
Stainless steel (AISI 304).



## STAINLESS COMPONENTS

Due to the ability to maintain hygiene and withstand cleaning products, our stainless steel **Wixroyd** & **Automation** components are the first choice for food packaging machines. Our precision captive and shoulder screws are largely trusted and facilitate reliable sealing and easy cleaning, minimising operational disruptions.



### P0130.A2

SHOULDER SCREWS  
CAP HEAD

Stainless steel  
(AISI 303).



### P0149.A2

CAPTIVE SCREWS  
BUTTON HEAD

Stainless steel  
(AISI 303).



### L1709 & L1772

BALL BUSHING &  
STAINLESS SHAFT

Stainless steel  
(440c).



### P0151.A2

CAPTIVE SCREWS  
BUTTON HEAD

Stainless steel  
(AISI 303).



### 34713

LEVELLING FEET  
BOLT DOWN, HD

Stainless steel  
(AISI 303).



### S0563

SURFACE MOUNT  
LEAF HINGES

Polyamide.



### 79760

PULL HANDLES  
3A STANDARD

Stainless steel  
(AISI 304).



### 73004

BALL KNOBS

Stainless steel  
1.4305.



### S4022

CONSTANT TORQUE  
FRICTION TORQUE  
HINGES

Stainless steel  
(AISI 430).



### L1872

SQUARE FLANGED  
BEARING UNITS

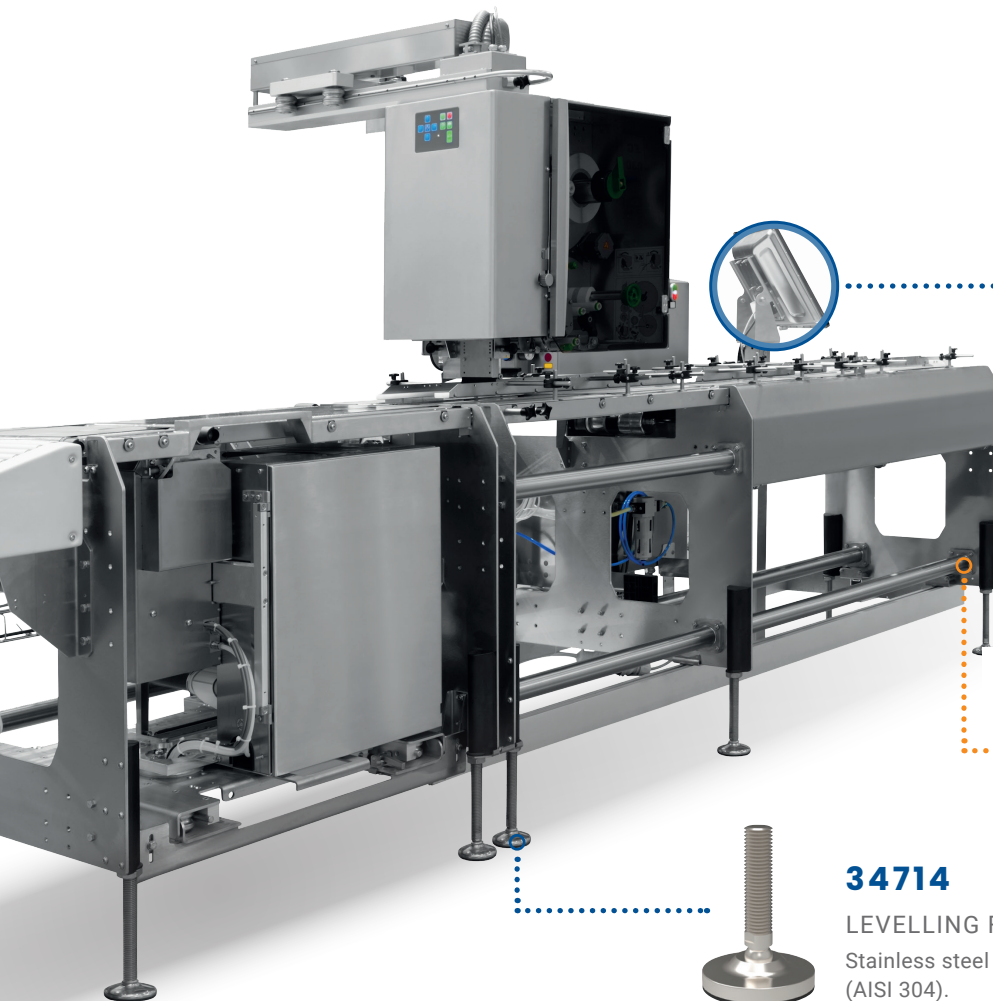
Stainless steel  
(AISI 304).



### 34714

LEVELLING FEET

Stainless steel  
(AISI 304).



# LABEL MACHINE



## LINEAR & DESIGN ELEMENTS

**Automation lead screws, nuts, shafts and bearings** offer accurate linear movement, making them a preferred choice to ensure precise positioning and alignment, which is a key for labelling machines.

To ensure secure mounting, our **shoulder screws** are ideal as they reduce vibration and loosening over time. Designers often use our ergonomically designed **Wixroyd handwheels and handles with textured grips**, to further enhance control and comfort during machine operation.

### P0144.ZP

PAN HEAD  
SHOULDER SCREW  
Steel, zinc plated.



### 77340

TWO SPOKED  
HANDWHEELS  
Duroplast, black, matt.  
Zinc plated steel hub.



### 33927

ONE TOUCH  
FASTENER  
BALL CLAMPING  
Steel, nickel plated.

### L1470

POSITION  
COUNTER  
Black thermoplastic,  
burnished steel  
bushing.



### 78190

PULL HANDLES  
Thermoplastic PA 6,  
glass ball reinforced,  
matt black.



### 74760

ADJUSTABLE  
CLAMPING  
LEVERS  
Black, matt  
thermoplast,  
reinforced.

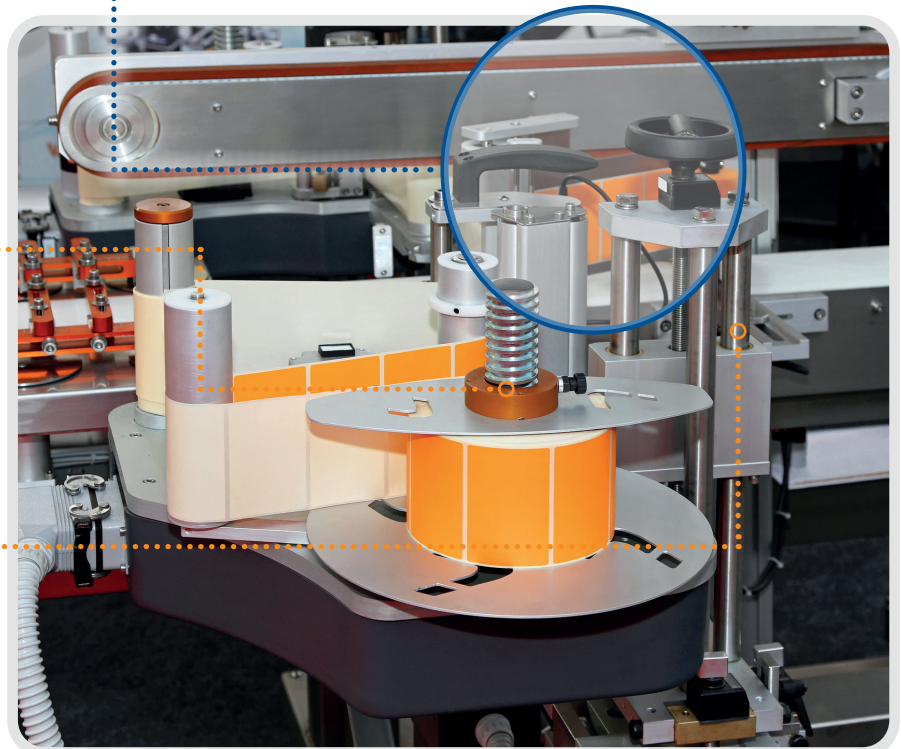
### L1320 & L1330

LEAD SCREW &  
CYLINDRICAL  
BRONZE NUT  
Steel & bronze.



### L1770 & L1706

HARDENED STEEL  
SHAFT & CLOSED  
BALL BUSHING  
Carbon steel  
& bearing steel.



## LINEAR & DESIGN ELEMENTS

We are a trusted supplier for components required in the manufacturing industry due to our range of sizes, materials and variations of **Automation linear systems**, and **Wixroyd levelling feet, handles and fasteners**.

With steel, stainless, titanium and aluminium options, we can help you find the right solution for your particular manufacturing application.



### L1772 & L1709

HARDENED STAINLESS SHAFT & BALL BUSHING  
Stainless steel (440C).



### A1003

CAM LATCHES FLEXI SYSTEM  
Die cast zinc.

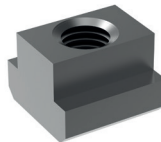
### P0163.A2

CAPTIVE SCREW WITH WASHER  
Stainless steel (AISI 303, 1.4305).



### L1016 & L1016.U

LINEAR GUIDE RAIL & CARRIAGE  
Hardened & ground steel.



### 24000

T-NUTS  
Steel, heat-treated, to tensile strength class 10.



### 34702

LEVELLING FEET BOLT DOWN  
Mild steel, nickel plated.



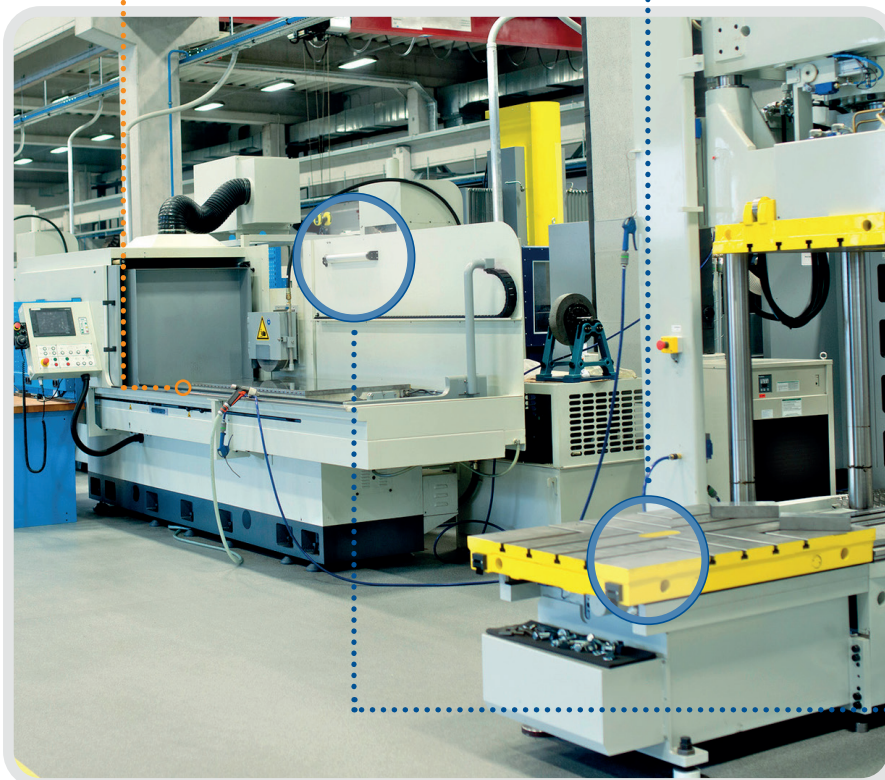
### 78000

CABINET HANDLES  
Duroplast, black, matt. Zinc plated steel hub.



### 79250

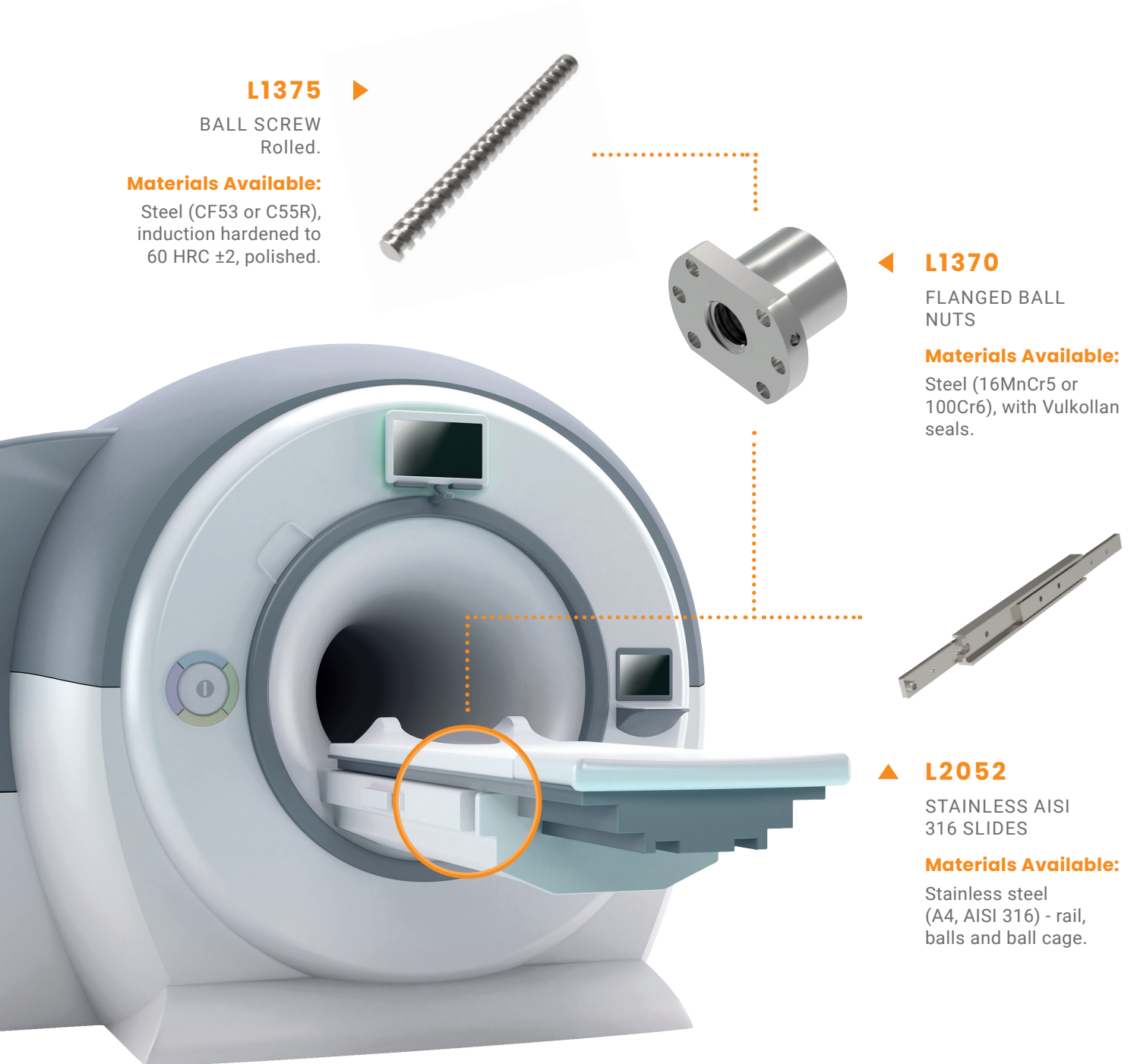
TWO SPOKED HANDWHEELS  
Aluminium & natural silver, anodised.



## MRI SCANNERS

MRI scanners and similar large medical machinery utilise long ball screws to create the movement of the bed in and out of the scanner. Due to the non-magnetic property of aluminium, the L1018 rail is well-suited to MRI scanners to prevent interference with the MRI's magnetic field, which can distort images.

Additionally, our stainless steel lead screws can withstand stringent cleaning protocols whilst allowing smooth operation to minimise vibrations and ensure accurate positioning, essential for image quality.



### L1375

BALL SCREW  
Rolled.

#### Materials Available:

Steel (CF53 or C55R),  
induction hardened to  
60 HRC  $\pm 2$ , polished.

### L1370

FLANGED BALL  
NUTS

#### Materials Available:

Steel (16MnCr5 or  
100Cr6), with Vulkollan  
seals.

### L2052

STAINLESS AISI  
316 SLIDES

#### Materials Available:

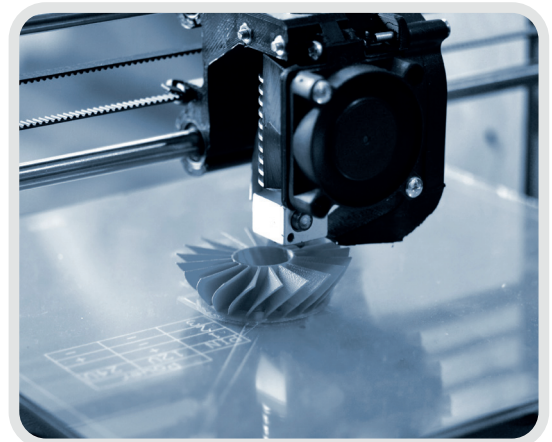
Stainless steel  
(A4, AISI 316) - rail,  
balls and ball cage.

# 3D PRINTERS

## LEAD SCREWS

Lead screws and their corresponding nuts are used in 3D printers to convert rotary to linear motion and come in a wide range of sizes materials. They work to move 3D printer head vertically or horizontally on linear shafts and bearings.

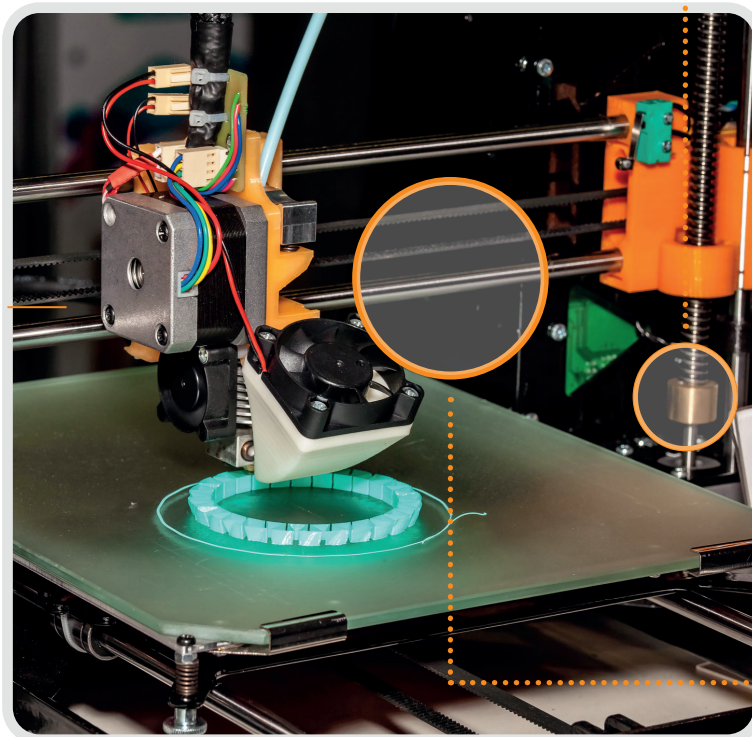
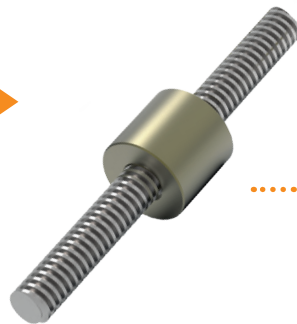
A common choice for these components are our hardened steel options due to their ability to ensure high-quality print resolution, achieve a balance between speed and accuracy, reduce maintenance due to their durability, maintain a stable print bed for consistent adhesion, and minimise filament clogs by ensuring reliable filament flow.



### L1320 & L1330 ▶

LEAD SCREW &  
CYLINDRICAL BRONZE NUT

**Materials Available:**  
Steel & bronze.



## SHAFTS

Linear shafts are used in 3D printers to enable smooth linear motion. They are available in a large range of sizes and lengths making them ideal for every application.



### L1771

HARDENED  
HOLLOW SHAFTS

**Materials Available:**  
Carbon steel (C60),  
surface hardness 60-65  
HRC bushing installed



## STAINLESS COMPONENTS

Our stainless steel range, predominantly 316 type, is ideal for dental laboratory press as it allows for easy sterilisation and resistance to cleaning agents. Equally, our components from **Automotion**, including **precision lead screws and bearings**, ensure proper alignment of shafts for even pressure distribution, crucial for high-quality prostheses.

**Wixroyd** ergonomic **palm grips** make for a common choice as they enhance comfort and safety, reducing operational strain.



### L1325 & L1331

STAINLESS  
LEAD SCREW &  
BRONZE NUT

Stainless steel  
(AISI 304, A2) & bronze.



### L1772 & L1709

STAINLESS  
440 SHAFT &  
BALL BUSHING

Stainless steel.



### 70042

PALM GRIPS

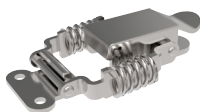
Stainless steel  
A2 (AISI 304), dull  
blasted.



### J0620

TOGGLE  
LATCHES

Steel or stainless  
steel.



## STAINLESS COMPONENTS

In a medical laboratory setting, the equipment can be exposed to chemicals and contaminants, making stainless steel 316 an optimal choice for its superior chemical resistance. **Automation sealing screws** with **Viton O-rings** create tight seals that resist chemical exposure, while **rolled or ground lead screws with anti-backlash nuts** ensure sustained accuracy and reliability.

**Wixroyd levelling feet** help stabilise equipment on uneven surfaces, ensuring accuracy and preventing vibrations that could affect sensitive procedures.



### 73004

**BALL KNOBS**  
Stainless steel  
1.4305, dull blasted.



### 78950

**PULL HANDLES**  
Stainless steel  
(AISI 316) mirror finish.



### 79760

**PULL HANDLES**  
3A STANDARD  
Stainless steel  
(AISI 304).



### 34701

**LEVELLING FEET**  
Steel or stainless  
steel.



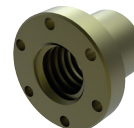
### S0741

**SURFACE MOUNT  
LEAF HINGES**  
Stainless steel 304.



### S4202

**SPRING HINGES**  
Stainless steel  
(AISI 304).



### L1331

**FLANGED  
BRONZE NUTS**  
Bronze (CuSn7ZnPb).



### L1322

**STAINLESS  
LEAD SCREW**  
Stainless steel  
(AISI 316L, A4).



### P0174

**BUTTON HEAD  
SEAL SCREWS**  
Stainless steel  
(AISI 303).



### L1010 & L1010.C

**MINIATURE LINEAR  
RAIL & CARRIAGE**  
Stainless steel.

## LORRIES & CAMPERVANS

Our cam latches, swing handles and paddle latches are primarily used to provide a secure and reliable means of keeping doors or panels closed, whilst allowing for easy access when required.

In addition, these components provide a secure fastening and latching mechanism preventing them from opening during transit. Cam latches such as A1003 can be provided in materials such as die cast zinc.

### A1103

CAM LATCHES  
INSERT DRIVER

Stainless steel  
(AISI 304).



### B4713

PUSH TO CLOSE  
PADDLE LATCHES

Steel, black powder  
coated.



### A1181

CAM LATCHES  
WING HANDLES

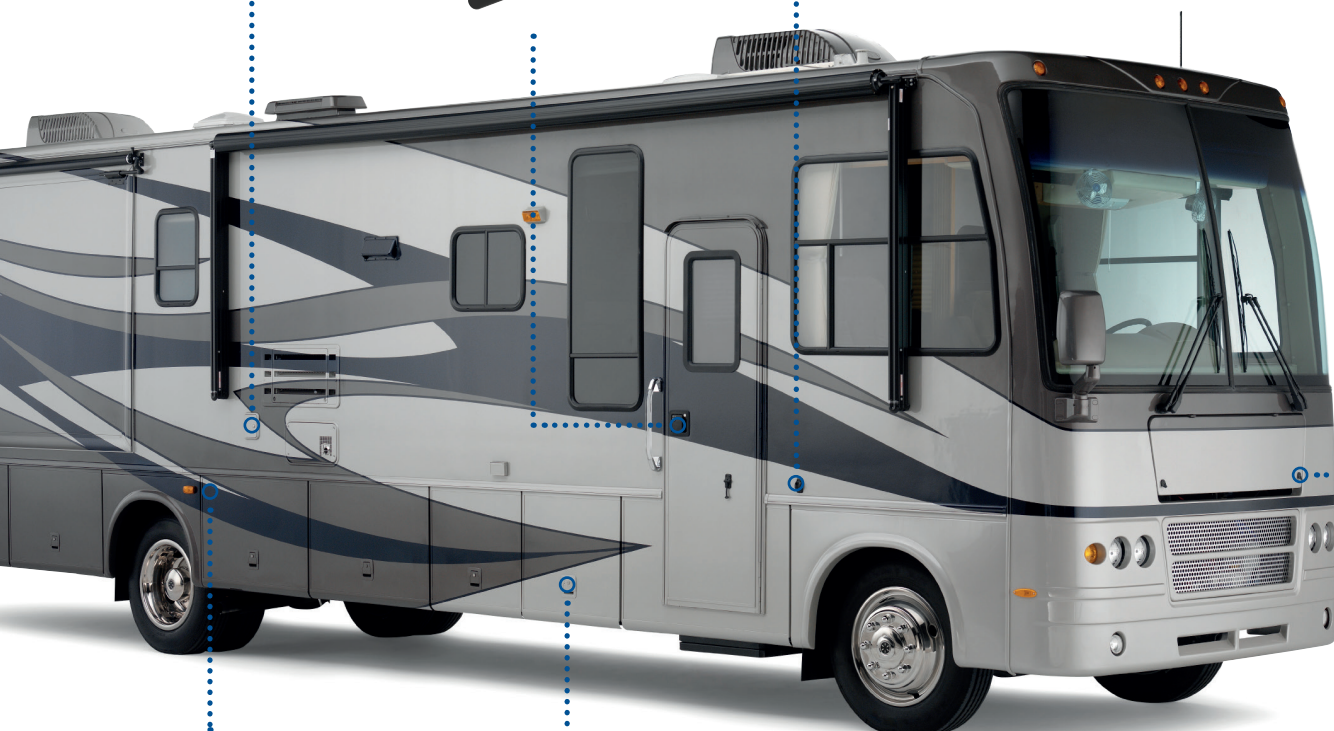
Die cast zinc.



### A1021

CAM LATCHES  
INSERT DRIVER

Polyamide plastic,  
black.



### N0954

LID STAYS  
Stainless steel  
(AISI 304).



### B4752

PUSH TO CLOSE  
PADDLE LATCHES

Stainless steel  
(AISI 304).



# PRIVACY SCREENS & DOORS

## LINEAR RAIL SYSTEMS & GUIDEWAYS

Our easy to install rail systems and miniature linear guideways allow privacy doors and screens to have a smooth, precise and low-friction operation, the net result of which is effortless movement. The components selected must support the weight and frequent use of the door or screen, without bending or breaking, whilst being as lightweight as possible.

### R2233

RIGHT ANGLE DRIVES  
TWO SHAFTS  
Aluminium.



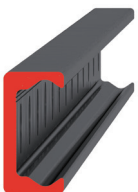
### L1349 & L1350

HIGH HELIX LEAD  
SCREWS & NUTS  
Stainless steel & resin.



### L1994

PARTIALLY  
TELESCOPIC SLIDES  
Hardened steel.



### L1918.TLC

COMPACT T-RAIL  
Carbon steel.



### L1918.CSW18

LIGHT DUTY SLIDERS  
SIZE 18  
Steel.

## LOCKS & HINGES

**Wixroyd locks and hinges** are often used for train control or communication panels to provide tamper proof security as required, whilst remaining easy to open. Similarly, our **index plungers** are used for bin lids and provide reliable operation in this high-use environment.



### 32570

INDEX PLUNGER  
PULL GRIP

**Materials Available:**

Steel, galvanized.

### S1120

SURFACE MOUNT  
LEAF HINGES

Polyamide.



### A1003

CAM LATCHES  
FLEXI-SYSTEM

Die-cast zinc.



### A0203

SINGLE POINT  
CAM  
FLEXI-SYSTEM

Steel, zinc-plated.



## LINEAR RAILS

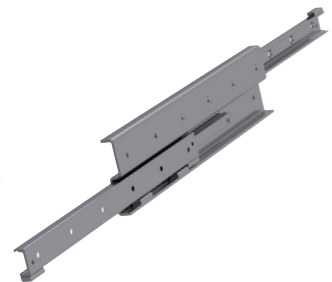
**Automation linear systems** are a great choice for the safe operation of carriage doors and can withstand the repeatable forward and backwards movement, time and time again.

### L1984 ▼

FULLY  
TELESCOPIC SLIDE

**Materials Available:**

Hardened steel.



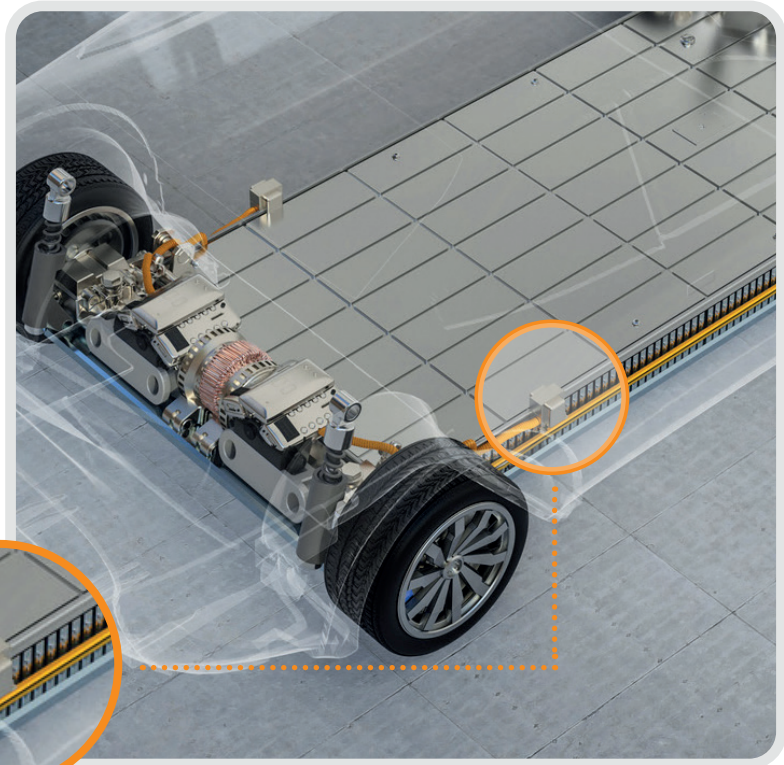
## ULTRA LOW HEAD SCREWS

**Automation ultra low head screws** have an extremely low head profile, which don't require a countersunk location hole, unlike flat head screws, making them the perfect solution for applications with minimal clearance, such as securing battery modules within EV cars.



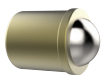
◀ **P0208.A2  
& P0208.A4**

ULTRA LOW HEAD  
CAP SCREWS  
303 and 316 series  
stainless.



## SPRING PLUNGERS

**Wixroyd's** array of **spring plungers** are proven to be reliable for millions of repetitions of securing and positioning with a quick release, and are used within an EV car charger holder.



◀ **32300**

SPRING PLUNGERS  
Stainless steel, delrin  
or brass.

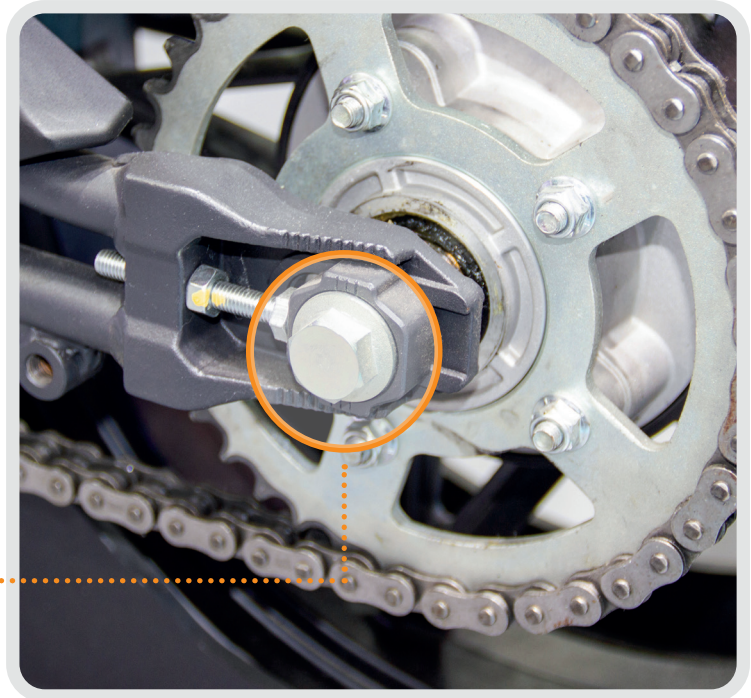


# LINKAGES

## AUTOMOTIVE

Our shoulder bolts and bearings are commonly used in the automotive sector, for example, in this application the long shoulder bolt retains a motorcycle wheel to its frame.

The bearings on the wheel are supported on the shoulder of the screw with a matching tolerance. This allows the wheel to freely rotate on the bearings whilst being secured in position.



### P0135 ▶

SHOULDER BOLT  
Stainless steel  
(A2, AISI 303).



## CAR BOOT

Available in steel or stainless, our ball and socket joints are a common component used in car boots as they allow movement and rotation in multiple directions.

Typically used at the ends of linkage bars, in this common everyday application we can see the ball joints on the end of gas struts that aid the controlled opening and closing of car boots.

### ◀ R3460

BALL & SOCKET  
JOINT  
Steel, zinc plated.



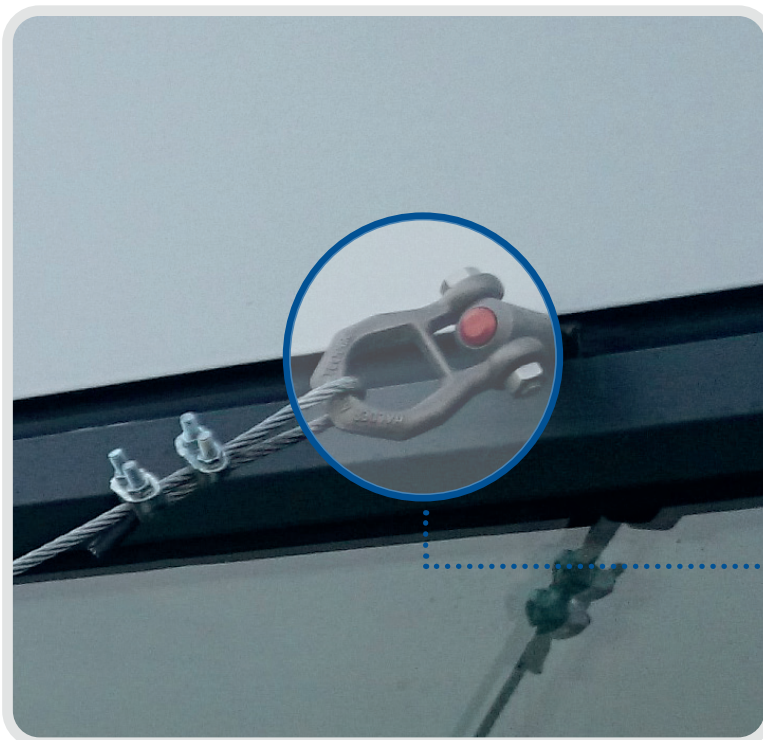
## FAÇADES

Quick lift pins play an important part in accessing façade elements. Maintenance of tall buildings means that the access platform can be subject to high cross winds, but our quick lift pins help to stabilise and securely locate a stationary platform in different positions - with quick and easy handling for the operator. Used in conjunction with locating bushes, quick lift pins provide a complete and secure locating solution.



### ◀ 33442

LOCATING BUSHES,  
PLAIN  
Stainless steel 1.4542,  
(AISI 630) precipitation  
hardened.



**33400** is a trusted choice for use in pre-installation and installation of building facades, cladding and maintenance cradles. This is due to the high load-bearing capacity from the steel and ability to withstand environmental stresses.

The self locking property provides easy insertion and removal which is handy when there's regular maintenance as well as ensuring the safety of the facade structure, protecting both the building and its occupants.



### ◀ 33400

QUICK LIFT PIN -  
SELF LOCKING  
Heat treated steel.



## BALL & SOCKET JOINTS

Durability against outdoor elements like sunlight, rain, wind, and temperature variations can be achieved by selecting **Automotion's stainless steel ball and socket joints** due to the ability to withstand harsh environmental conditions.

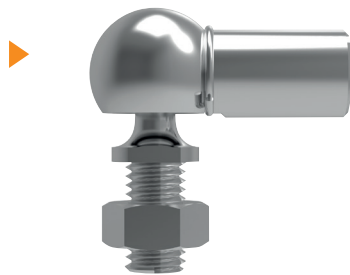
These joints also provide smooth movement, allowing precise adjustment of the solar panels to consistently follow the sun's path throughout the day, making them a popular choice.



### R3466 & R3468

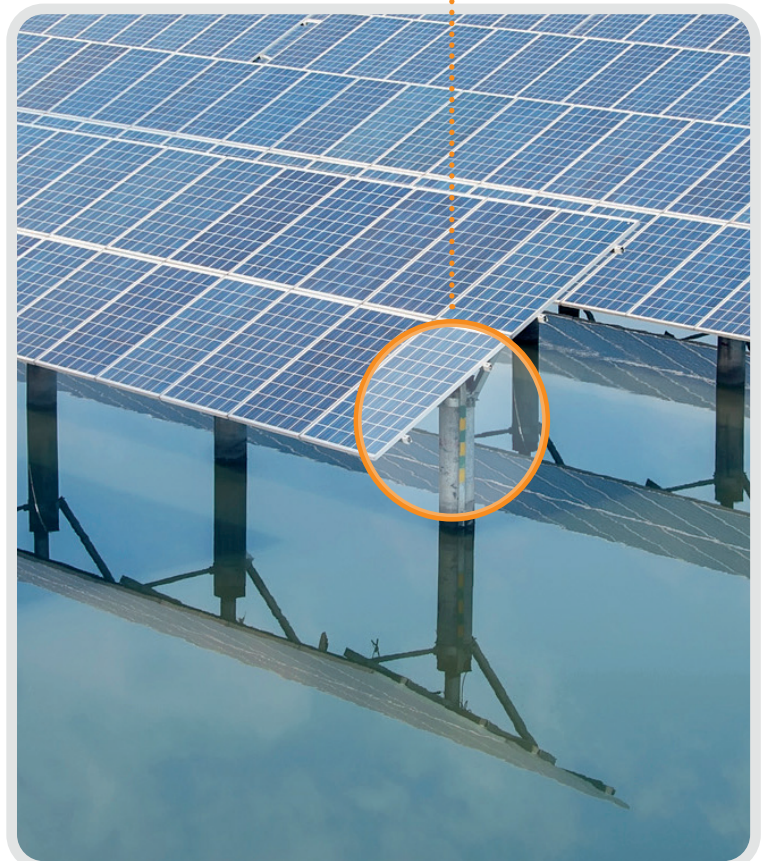
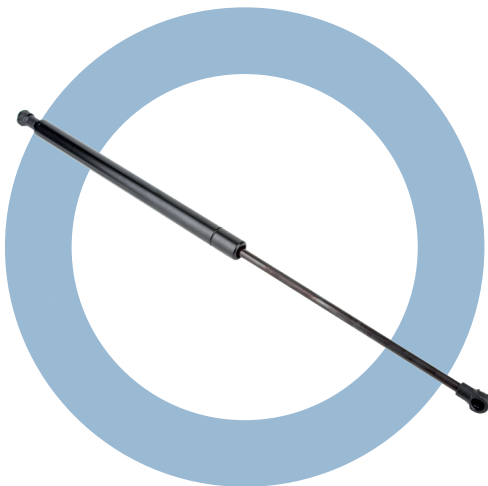
STAINLESS  
BALL & SOCKET  
JOINTS

Stainless steel  
A2, AISI 303 &  
A4, AISI 316.



## GAS STRUTS

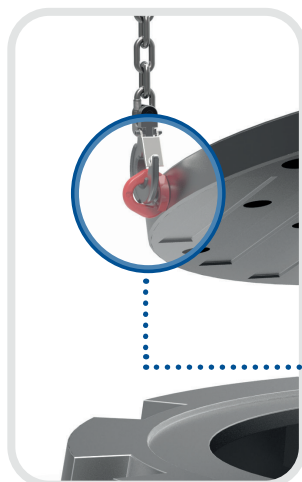
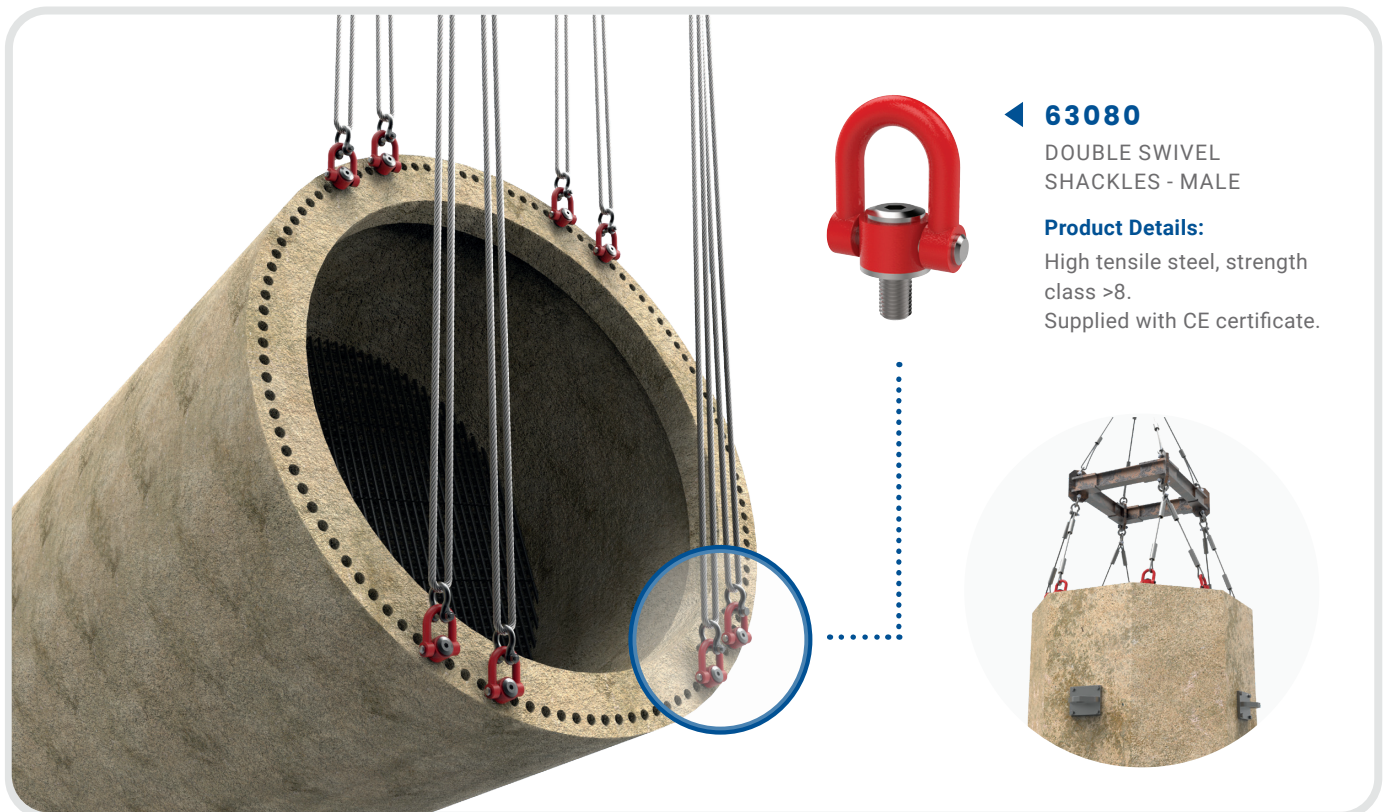
Similarly our **Wixroyd gas struts** offer highly stable panel support, providing structural integrity against wind and external forces - ideal for solar panel farms with varying weather conditions.



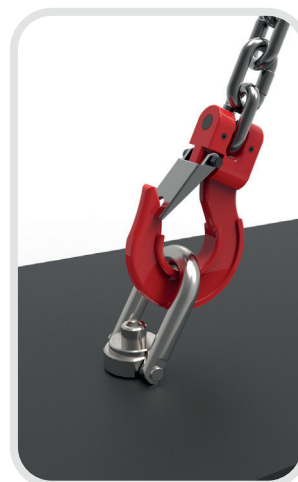
## SWIVEL LIFTING RINGS

Our heavy duty swivel lifting rings which are tested and certified for guaranteed loads for safety critical applications.

The swivel lifting rings can pivot, and rotate 360 degrees around it's base to allow lifting from any direction, ideal if the fixing points on the machinery or equipment to be lifted are located on the sides which made them perfect solution in this construction application.



**63020**  
SWIVEL EYE BOLTS MALE  
High tensile steel.



**63501**  
LIFTING POINTS DOUBLE SWIVEL - MALE  
Forged alloy steel.



## GYM EQUIPMENT

By selecting **Automotion linear shafts and bearings** with high load capacities, will ensure gym equipment can support heavy weights safely and without deformation. They are a common choice due to our range of sizes and we can precisely match shaft diameters and bearing sizes to design specifications guarantees smooth operation.

### L1772 ▶

STAINLESS SHAFT  
Hardened.



### L1709 ▶

BALL BUSHINGS

**Materials Available:**

Stainless steel body (440C)  
with a resin (POM) retainer.



## BALL LOCK PINS

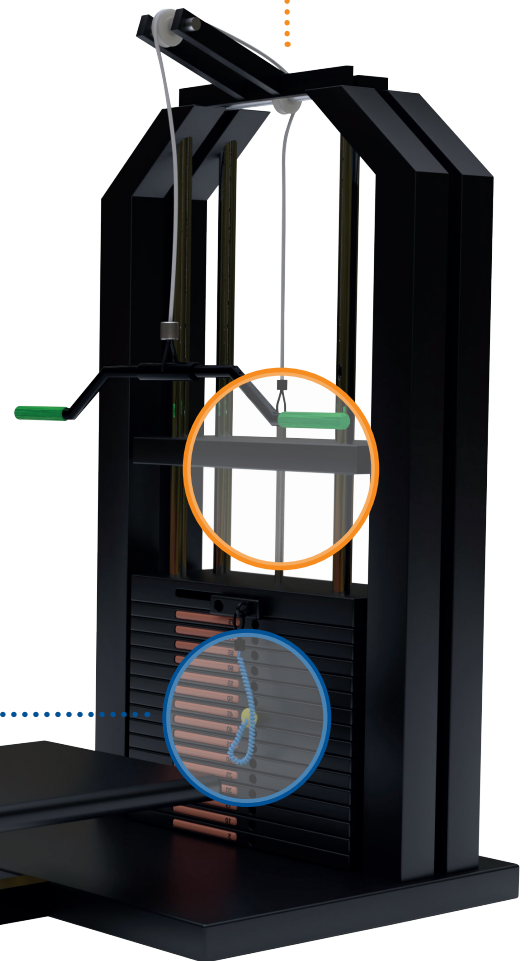
**Wixroyd's** robust **ball lock pins** with secure locking mechanisms prevent accidental disassembly, enhancing user safety and equipment reliability.

### 33140 ▶

SOCKET PINS  
Non-locking

**Materials Available:**

Stainless steel (AISI 303).  
Thermoplastic handle.



## BALL LOCK PINS

Ball lock pins can be used on sound and light rigging systems for stages and concerts. They provide an excellent solution for securing speakers and lights.

The high quality of Wixroyd ball lock pins gives operators confidence in their rigging system, while additionally both grip and actuation buttons are fully black powder coated; eliminating accidental glare from other stage lighting.



◀ **33200**  
BALL LOCK PINS  
T-HANDLE

**Product Details:**

Single acting, T-handle.  
Self-locking. Stainless steel.



◀ **33224**  
BALL LOCK PINS  
MUSHROOM HANDLE

**Product Details:**

Single acting, self-locking.  
Stainless steel.

## YACHTS

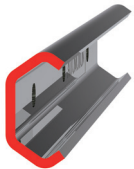
Automation's range of **stainless x-rails** and **Wixroyd hinges, handles and cam locks** ensure longevity and reliability, built to withstand significant stresses and loads making them ideal when selecting components for use on a amphibious vehicle, in particular resistance to seawater and marine environments.

Our components ensure quick and easy access to equipment and compartments that can be operated with wet or gloved hands.



### L1971.T

STAINLESS X RAIL  
Stainless steel (316L).



### L1971.LP

LOW PROFILE STAINLESS SLIDERS  
Stainless steel (316L).



### S0460

SURFACE MOUNT LEAF HINGES  
Stainless steel (AISI 316).



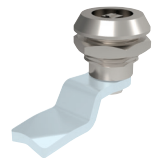
### 78820

PULL HANDLES  
Stainless steel.



### A1103

CAM LATCHES FLEXI-SYSTEM  
Stainless steel (AISI 304).



## UNIVERSAL JOINTS

The universal joints we provide are regularly trusted in subsea oil trees to facilitate the opening and closing of valves on oil tree pipes.

They are stainless steel to provide durability and corrosion resistance whilst withstanding high pressures and varying temperatures which is ideal for the naturally corrosive and harsh environments. Additionally, they are highly reliable which is important due to the remote or inaccessible location.



▲ **R3694**  
STAINLESS SINGLE  
UNIVERSAL JOINT  
Stainless steel (AISI 304).  
To DIN 808.  
Square bore.

## UNDERWATER ROV

Designed specifically for a remotely-operated valve actuation project, the **R3694** custom stainless steel universal joint has a 2-inch OD. The male end of the joint actuates the valve, whilst the female end is mounted on a Remotely Operated Vehicle (ROV).

Due to the custom stainless steel compression spring, the joint remains axially straight during operation and can interface with the valve. Both ends of the component feature square input and output hubs with pin holes.



# WE ARE The Wixroyd Group family

Our **three companies** each specialise in specific products and services designed to meet the needs of Design & Project Engineers, Mechanical Engineers, Product Engineers and those in production.

Across our brands we offer an **extensive website** showcasing a large range of products, supported by **great stock availability, detailed product datasheets, application examples, free CAD downloads and easily accessible live chat, email and phone support** at your fingertips, should you need any technical advice. Each brand has a different product offering, please see below for an overview of which brand may be more suited to you.

## ▶ DESIGN ELEMENTS

Our range of standard parts from spring plungers to lifting pins.

## ▶ ACCESS COMPONENTS

A broad range of components enhancing access applications.

## ▶ WORKHOLDING

From fixing elements to clamping systems and base plates we have an extensive range of workholding solutions.



scan to visit our website



**Wixroyd**<sup>®</sup>  
AN ESSENTRA COMPANY

## ▶ MECHANICAL COMPONENTS

A huge variety of mechanical components with a large range of fasteners made in-house at our Chichester site.

## ▶ LINEAR COMPONENTS

A leading supplier of linear with an extensive range available.

## ▶ LINKAGES & ROTARY COMPONENTS

From universal joints & rod ends to gears and clevis joints.



scan to visit our website



**Automation**<sup>®</sup>  
AN ESSENTRA COMPANY

## ▶ THREAD INSERTS

A broad range of thread inserts to suit any application.

## ▶ SCREWS & WASHERS

Screws & washers available in a large range of materials from nylon and polypropylene to stainless steel, brass and titanium.

## ▶ QUICK RELEASE PINS

From T-handle to spring loaded pull pins and lanyards.



scan to visit our website



**Teknipart**<sup>®</sup>  
AN ESSENTRA COMPANY



wixroyd.group | 0333 207 4497 | sales@wixroyd.com



**Wixroyd**<sup>®</sup>  
**group**  
AN ESSENTRA COMPANY

wixroyd.group



**Wixroyd**  
wixroyd.com | 0333 207 4497



**Automation Components**  
automationcomponents.co.uk | 0333 207 4498

Wixroyd Group Ltd, Alexia House, Glenmore Business Park,  
Portfield Works, Chichester, PO19 7BJ (UK)

To opt out of the Wixroyd Group database please email  
marketing@wixroydgroup.com

Grp\_P\_1042



Follow us  
@WixroydGroup